

# Road-map

## Product Development Point

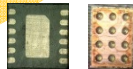
- Very Small Package (WLCSP)
- High Efficiency (90% ↑)
- High Current (150mA)

### DW8730P



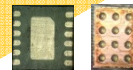
- Single Output Voltage
- Efficiency Up to 85%, Current Capacity 150mA
- Output Voltage 5.0V ~ 12V
- 12-UDFN 3.0mm × 3.0mm

### DW8752x



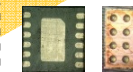
- Efficiency Up to 85%, Current Capacity 70mA
- VOUT Pos. 4.6V ~ 5.7V, Neg. -4.6V ~ -5.6V(0.1 Step)
- 12-UDFN 3.0mm × 3.0mm
- 12-WLCSP 1.7mm × 2.2mm

### DW8754



- Efficiency Up to 90%, Current Capacity 150mA
- VOUT Control by S-Wire
- VOUT ±4.6V ~ 6.0V(0.1 Step), Default Voltage Variable
- SIMO or Dual Inductor select function
- 12-UDFN 3.0mm × 3.0mm
- 12-WLCSP 1.31mm × 1.55mm

### DW8755



- Efficiency Up to 90% ↑, Current Capacity 100mA
- VOUT Control by S-Wire or I2C
- VOUT ±4.6V ~ 6.0V(0.1V Step)
- SIMO(Single Inductor, Negative Charge pump)

Leading of Product & Technology  
for High-end LCD Market

2012

2013. 1Q

2013. 2Q

2013. 3Q

Year